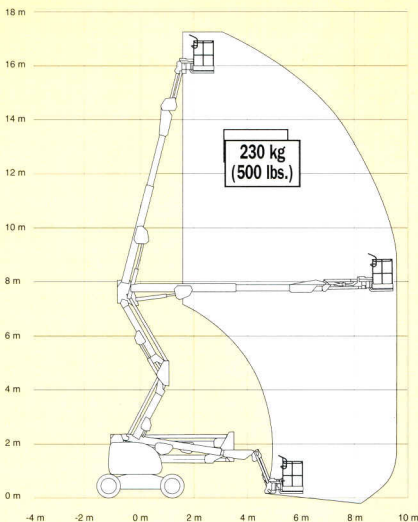
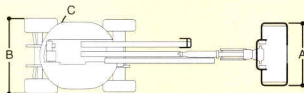
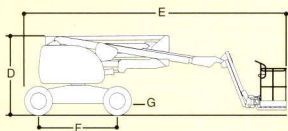


# JLG MODEL 510AJ



## REACH SPECIFICATIONS

Platform Height	15.81 m (51 ft 10 in.)
Horizontal Reach	9.48 m (31 ft. 1.5 in.)
Up and Over Height	7.63 m (25 ft. 0.5 in.)
Turntable Rotation (non continuous)	360°
Platform Capacity – Unrestricted	230 kg (500 lbs.)
Platform Rotator (Hydraulic)	180°
Jib – Overall Length	1.24 m (4 ft. 1 in.)
Jib – Range of articulation	145° (+75°/ -70°)



## DIMENSIONAL DATA

A. Platform Size	0.76 m x 1.83 m (30 in. x 72 in.)
B. Overall Width with 12 x 16.5 tyres	2.26 m (7 ft. 5 in.)
Overall Width with 33/1550 x 16.5 tyres	2.34 m (7 ft. 8 in.)
C. Tailswing (working condition)	Zero
D. Stowed Height	2.26 m (7 ft. 5 in.)
E. Stowed Length	7.68 m (25 ft. 2.5 in.)
F. Wheelbase	2.34 m (7 ft. 8 in.)
G. Ground Clearance	0.36 m (1 ft. 2 in.)
Gross Vehicle Weight*	7,300 kg (16,100 lbs)
Maximum Ground Bearing Pressure	3.37 kg/cm <sup>2</sup> (47 psi)
Drive Speed	7.2 km/h (4.5 mph)
Gradeability	45%

## CHASSIS

Tyres - Standard	Foam Filled 12 x 16.5
Tyres - Optional	Foam Filled 33/1550 x 16.5
Axle Oscillation (standard)	0.10 m (4 in.)
Turning Radius – Inside	2.00 m (6 ft 7 in.)
Turning Radius – Outside	5.00 m (16 ft 5 in.)

## POWER SOURCE

Diesel Engine (Deutz F3M1011)	35KW
Fuel Tank Capacity	62.5 L (16.5 gal.)
Hydraulic Reservoir	113.6 L (30 gal.)
Auxiliary Power	12V DC

## Standard Features

0.76 m x 1.83 m (30 in. x 72 in.) low mount side entry platform, Side entry with inward swing gate, Multiple function operation, Full proportional drive/steer joystick control, Full proportional main boom and swing joystick control, Variable speed dial control for lower boom, telescope and platform rotate, 1.24 m (4 ft. 11 in.) articulating jib, 180 degree powered platform rotator, Platform console machine status light panel<sup>1</sup>, AC power cable to platform, Deutz F3M1011 diesel engine, Engine distress warning system<sup>2</sup>, Gull-wing turntable hoods, Swing-out engine tray, Spark arresting muffler, Control ADE™ – Advanced Design Electronics System, Hydrostatic transmission, Four wheel drive, Horn, 4 degree tilt alarm and indicator light, Rim protector foam filled lug tread tyres 12 x 16.5, Oscillating axle, Lifting/tie down lugs, Hour meter, Ground control selector switch with key lock, Noise reduction package, Platform tool tray, 12V-DC auxiliary power.

## Available Options

0.76 m x 1.52 m (30 in. x 60 in.) low mount side entry platform, 0.76 m x 1.22 m (30 in. x 48 in.) low mount side entry platform, 12 mm air line to platform, Boom wipers, 33/1550 x 16.5 wide foam filled tyres, On-board 2500W generator, SkyPower™ Package 7,500 watt on-board generator, SkyWelder™ Package 250 amp welder in the platform<sup>3</sup>, Travel alarm, All motion alarm, Platform work lights, Head and tail lights, Nite-Bright™ accessory package (consists of six 40 watt lights), Flashing amber beacon, Hostile environment package<sup>4</sup>, Catalytic Purifier Muffler, Storage tray.

<sup>1</sup> Provides indicator lights at platform control console for system distress, low fuel, 4 degree tilt light, and foot switch status.

<sup>2</sup> Low oil pressure and high coolant temperature alarms.

<sup>3</sup> Available when integrated with the SkyPower™ package

<sup>4</sup> Includes console cover, boom wipers and cylinder bellows.

\*Certain options or country standards will increase weight.

Specifications may change to meet country standards or with the addition of optional equipment.